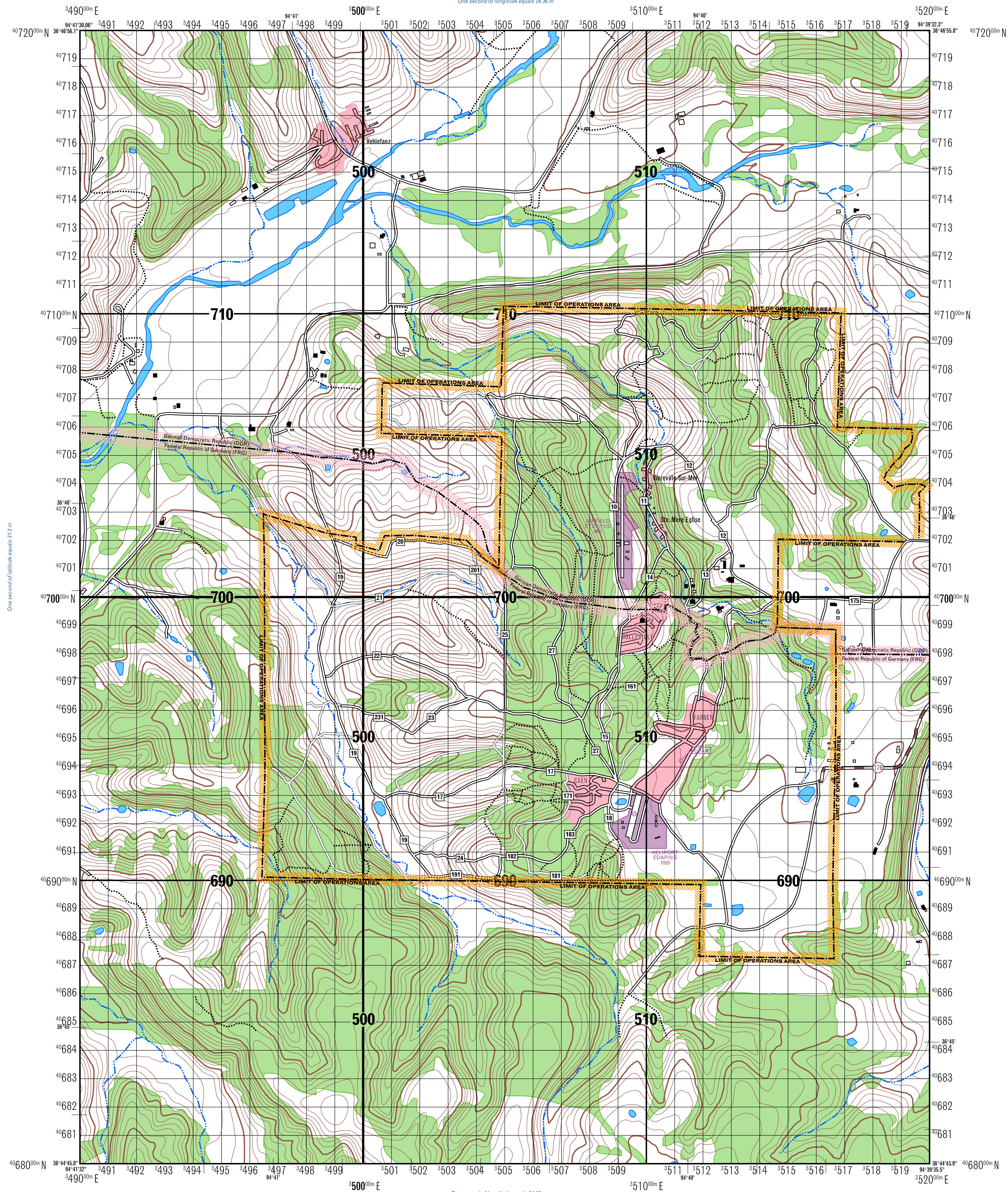


One second of longitude equals 24.36 m

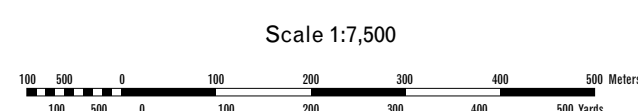


One second of latitude equals 31.3 m

One second of latitude equals 31.3 m



Prepared and published by the Defense Mapping Agency Topographic Center, Washington, D.C.



CONTOUR INTERVAL 10 FEET

LEGEND
MAP INFORMATION AS OF 1983, REVISIONS 1978 NOT FIELD CHECKED
ON THIS MAP, A LANE IS GENERALLY CONSIDERED AS BEING A MINIMUM OF 2.5 METERS (8 FEET) IN WIDTH

ROADS	Occupied permanent dwellings	Unoccupied buildings or structures
Secondary all weather, hard surface, two or more lanes wide	Horizontal control station	Bench mark, non-monumented
Light duty, all weather, improved surface	Bench mark, monumented	Spot elevations in feet: checked, unchecked
Light duty, seasonal, unimproved surface	Bench mark, non-monumented	Woodlands
Trail or unimproved surface road	Spot elevations in feet: checked, unchecked	Vineyard; Orchard
Route markers: State highway	Woodlands	Pond
	Vineyard; Orchard	Intermittent pond or lake
	Pond	Intermittent stream
	Intermittent pond or lake	Unclassified stream
	Intermittent stream	
	Unclassified stream	
BOUNDARIES		
National border		
Reservation: military operations area		
Fenceline		
Power transmission line		

SPHEROID CLARKE 1866
GRID 100 M UTM ZONE 15
PROJECTION TRANSVERSE MERCATOR
VERTICAL DATUM NATIONAL GEODETIC VERTICAL DATUM OF 1929
HORIZONTAL DATUM WORLD GEODETIC SYSTEM 84
CONTROL USGS, USCGS & DMA
PREPARED BY KCAA GIS AUTH
PRINTED BY DEFENSE MAPPING AGENCY TOPOGRAPHIC CENTER 7 84

SAMPLE 1000 METER GRID SQUARE

46
12 13 45

UA

GRID ZONE DESIGNATION

15S

100 METER REFERENCE

1. Read large numbers labeling the VERTICAL grid line left of the point and estimate tenths (100 meters) from gridline to point. 12 3
2. Read large numbers labeling the HORIZONTAL grid line below the point and estimate tenths (100 meters) from gridline to point. 45 6

Example: 123456

WHEN REPORTING OUTSIDE THE 100,000 METER SQUARE AREA IN WHICH THE POINT LIES, PREFIX THE 100,000 METER SQUARE IDENTIFICATION.

Example: WD123456

WHEN REPORTING OUTSIDE THE GRID ZONE DESIGNATION AREA IN WHICH THE POINT LIES, PREFIX THE GRID ZONE DESIGNATION.

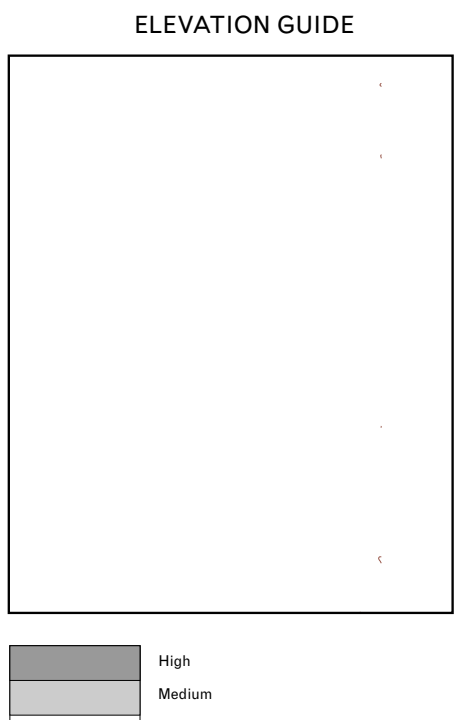
Example: 15SWE123456

GRID CONVERGENCE
2°39' (47 MILS)
FOR CENTER OF SHEET

TO CONVERT A MAGNETIC AZIMUTH TO A GRID AZIMUTH
SUBTRACT G-M ANGLE

TO CONVERT A GRID AZIMUTH TO A MAGNETIC AZIMUTH
ADD G-M ANGLE

2000
G-M ANGLE
1°11'
(18 MILS)



THIS MAP IS RED-LIGHT READABLE
DMA STOCK NO. V7781X21546 ED. NO. 021